

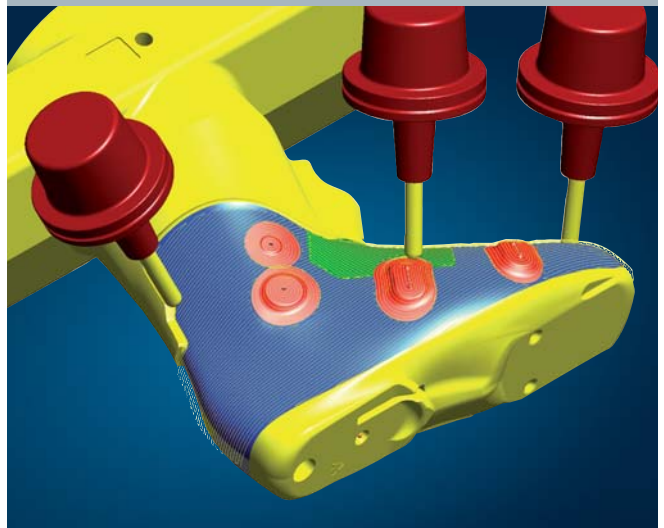
Milling an injection mould for a skiing boot on a Hermle C 40 U dynamic

hyperMILL® provides a wide range of 2D, 3D and 5AXIS strategies for fast, reliable machining of complex workpieces with undercut areas. The number of job steps is reduced significantly through the use of 5AXIS technology. The post-processing required to produce the specified surface quality is minimal. Both programming and machining times are reduced.



5AXIS finishing

Fully automated collision avoidance allows for shorter tool paths, conical tools and tools with thickened shafts. Compared to fixed-angle milling, continual movement cycles produce superior surface quality.



Machine: C 40 U dynamic

Output values: 18,000 1/min/15 kW

Clamping surface: Ø 420 mm

Rapid travel linear: 45/60 mm/min

Traverse paths X axis: 850 mm

Traverse paths Y axis: 700 mm

Traverse paths Z axis: 500 mm

Tilt area: +91°/-139°

Speed A/C axis: 55/65 min⁻¹

Max. tabel load: 450 kg

Controller: Heidenhain iTNC530



OPEN MIND Technologies AG
Argelsrieder Feld 5 • 82234 Wessling • Germany
Phone +49 (81 53) 93 35 00 • Fax +49 (81 53) 93 35 01
E-Mail info@openmind-tech.com
Internet www.openmind-tech.com



Maschinenfabrik Berthold Hermle AG
Industriestraße 8-12 • 78559 Gosheim • Germany
Phone +49 (74 26) 95-0 • Fax +49 (74 26) 95-61 10
E-Mail info@hermle.de
Internet www.hermle.de